

Welcome to Year 1 - Sept 2024



In Year 1, we aim to promote and develop independence, excite a love of learning, continue to develop social skills and help them to be the best that they can be.

Values



Aspiration

We believe that having high expectations helps our pupils develop the determination and resilience they need to thrive in the modern world.



Integrity

We believe that a strong sense of moral purpose, honesty and fairness are essential qualities to build a successful school community.



Identity

We believe that our pupils should be happy, confident and have high self-esteem; proud to be part of James Oglethorpe Primary School.

Our values underpin everything we do at James Oglethorpe.

Attendance and punctuality



- Mrs McCann – Attendance officer and we have an Education Welfare Officer (EWO) who works with families when attendance falls below 90%

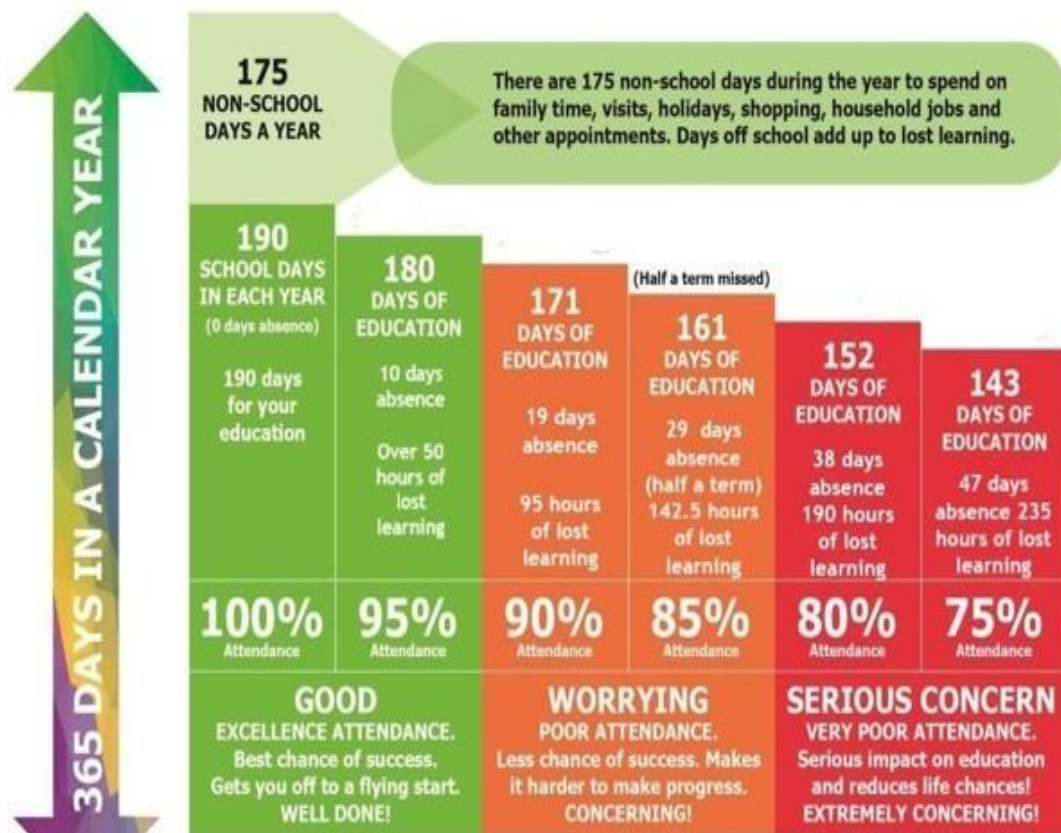
- To report an absence then email attendance@jamesoglethorpe.havering.sch.uk or leave a message on the school phone 01708 225202.

- We do not authorise holidays in term time - we pass any unauthorised leave of absences to Havering and a fine maybe issued. FYI The school does not receive the money.

- Earlier start times - need to change morning routines

EVERY SCHOOL DAY COUNTS

Don't miss out on the education you deserve.



Good attendance means being in school at least 94% of the time or 180-190 days. Did you know? A two week holiday in term time means that the highest attendance you can achieve is 94.5%.

Key staff in phase and school



- Class teachers – Mrs Smith (1S) and Mrs Bevan (M-th) and Mrs Maker (F) (1BM)
- Support staff - TAs - Ms Nichols, Mrs Gotobe,
1:1s - Mrs Vick, Mrs Wyatt, Miss Osbourne, Miss Moss, Mrs Camfield
- Phase Leader – Mrs C Smith (Squirrels)
- ELSA - Mrs Stokes
- Assistant Head Teacher- Miss Northwood
- Lead Practitioner- Mrs Bourne
- Deputy Head Teacher -Mrs Chapman
- Head Teacher - Mr Fielder

Uniform



Unisex Winter Uniform Year 1-6

- Red V-neck sweatshirt or cardigan
- White shirt with a school tie
- Grey skirt, culottes, tailored trousers or pinafore dress (Skirts should be of a reasonable length with no side splits)
- Plain socks or tights (white or grey no trainer socks)
- Black shoes (Non-slip and flat. No trainers or boots which are higher than the ankle)
- A pair of wellington boots and a waterproof jacket.



Unisex Summer Uniform Years 1-6



- Red checked gingham dress
- Red sweatshirt or cardigan with school logo
- As winter uniform but short grey trousers may be worn
- Plain socks (white or grey no trainer socks)
- Black shoes (As specified in the winter uniform list and no strappy sandals, ankle straps or open toes in the summer)

PE kit

- White plain T-shirt or T-shirt with the school logo
- Red shorts
- Trainers or black plimsolls (for outdoor P.E. – pupils will be barefoot for indoor P.E.)
- Plain black or grey tracksuit (can be worn for outdoor P.E. in the winter months)



Curriculum



	Autumn 1	Autumn 2	Spring 1	Spring 2	Summer 1	Summer 2
RE	Harvest assembly	Who are Christians and what do they believe? Diwali Christmas	Creation	Who are Christians and what do they believe? Easter	Creation stories 3 stories TTS Hindu Muslim Christian	Who influences our lives? Stories from Islam and Christianity.
History	Toys - History Toy workshop		Local area Upmister windmill - History and Geography Revisit materials linked to buildings.		Transport - Who invented cars, planes and trains.	

Geography		Weather - see ongoing	Local area Upmister windmill - History and Geography		The UK
<p>Ongoing - link to Science Each month add to display that runs through the year Record the weather including temperature - watch weather forecast (link to learning about Great Britain - map) Weather forecast station in the bay. Talk about North, East, South, West. Daylight hours - record this What clothing is appropriate for the weather? Link to materials</p>					
<p>Science 4 topics to be spread over the year and every topic taught each term.</p>	<p>Autumn 1 Materials - link to toys Autumn 1 Senses and my body - labelling body parts and sight Autumn 1 Animals - identify and name animal groups. (fish, amphibians, reptiles, birds, mammals, insects) Autumn 2 Plants - deciduous and evergreen Autumn 2 Seasons - reviewing photos - see ongoing</p>	<p>Materials - link to buildings Plants - seeds and bulbs Animals - describe and compare the structure of a variety of common animals. Senses and my body - revisit sight, teach hearing and touch Seasons - reviewing photos - see ongoing</p>	<p>Materials - properties of materials and classifying Plants - labelling parts of plants, naming garden and wild plants. Animals - carnivores, omnivores and herbivores Senses and my body - revisit senses and teach taste and smell. Seasons - reviewing photos - see ongoing</p>		
<p>Ongoing - link to Geography Each month add to display that runs through the year Take a photo of deciduous and evergreen tree outside Photo of flower beds Look at changes from the last photo Discuss the season Record the weather including temperature - watch weather forecast (link to learning about Great Britain - map) Daylight hours - record this What clothing is appropriate for the weather? Link to materials</p>					

English	English linked to toys	Festivals	English linked to windmill plus traditional tales		Transport Poetry	
Art		Andy Goldsworthy natural art		Joe Simpson		Art - london landmarks

DT	Pop up puppets		Playground equipment, parent workshop		Fruit kebabs/smoothies	
PSHE Jigsaw	30 mins per week. Whole class feedback and mop up. No books until Summer term/Year 2. Rainbow challenge where appropriate.					
Computing	Log in Google classroom	We are digital artists	We are rhythmic	We are publishers	We are digital chefs	We are detectives

Trips/ WOW moments

- Teddy Bears Picnic (this Friday 13.9.24)
- Toys workshop
- Bike Riding
- Junk Modeling making (teamwork)
- Trip to Upminster
- Trip in summer term usually a farm or a zoo TBC



Rainbow Challenges



In Year 1 we have a busy curriculum to meet whilst trying to transition our young children from Reception to KS1.



Your child will have opportunities throughout the day to explore the Year 1 environment and challenge themselves during 'Explore and Learn'.

During this time we also set 'Rainbow Challenges'. These are set activities linked to the NC which we expect them to complete. This weeks challenges for example are; labeling parts of the body (science), sorting objects (maths) and describing a soft toy (Literacy)

Home-learning in Year 1



Here are a variety of activities which your child can **choose from** to complete over the course of the half-term, linked to their topic. They may wish to post a picture/video of their outcome on **Google Classroom**, to share with their class/teacher.

<p style="text-align: center;">Maths</p> <p>To count a selection of objects up to 20 (this could be toys, food, anything). Then answer questions such as what if we had 1 more? 1 less? How do we write this number (digits)?</p>	<p style="text-align: center;">English</p> <p>To write about a toy which you enjoy playing at home. Try to include things like how it is played, why you like it, who plays it with you, etc. Remember as you write to use your Fred Fingers, finger spaces and a full stop at the end of each sentence.</p>	<p style="text-align: center;">History</p> <p>Talk to an older relative or family friend about the toys they used to play with when they were children. Ask them how their toys were different and similar to the toys which you enjoy playing with.</p>
<p style="text-align: center;">PSHE</p> <p>We are always supporting the children to be more independent. As we come closer to Winter please work with your child and encourage them to dress themselves. This includes zipping up their own coat, doing and undoing buttons, putting on gloves, taking on and off their own jumper, etc.</p> 	<p style="text-align: center;">Toys From The Past</p>  <p style="text-align: center;">Homework Choice Grid</p>	<p style="text-align: center;">Art & DT</p> <p>To make your own ball and cup game. Here is a video which you can watch for the instructions.</p> <p style="text-align: center;">  Kids Crafts- Make a Cup and Ball Game </p> <p style="text-align: center;"> https://www.youtube.com/watch?v=5f0uCGA8R88 </p>
<p style="text-align: center;">PE</p> <p>To practice an old fashioned game such as skipping, hop scotch, hula hooping.</p>	<p style="text-align: center;">Fine Motor - cutting</p> <p>Can you find pictures of toys that you like (printed, magazines, newspapers), cut them out and make a poster of them.</p>	<p style="text-align: center;">Science</p> <p>Over this year we are looking at how the seasons change. As we enter Autumn please discuss the signs that Autumn is here. We would love for you to collect any natural objects to bring in (e.g. pine cones, conkers (both in shells and out,  acorns, etc).</p>

Your child will also have logins for which they can access at any time:

- Numberbots

Home-learning in Year 1



Weekly spellings - given out on Tuesday both online and a paper copy. These are to be practised at home and the test is in school the following Tuesday.

Numberbots - we recommend that children play for at least 20 minutes a week (can be broken into smaller sessions). This is set at your child's level and gives them the opportunity to tackle concepts they might be finding tricky until they become more secure.

Reading - we encourage parents to read with their children at home daily. There will be no expectation to record this in reading records however if you would like to use the record to write a comment that would be great. This year we have also decided to remove extrinsic 'rewards' for reading however we will be arranging a number of school events linked to reading for pleasure which we will contact you about in the near future.

Typical Day In Year 1



THE JAMES OGLETHORPE PRIMARY SCHOOL YEAR 1

Year 1

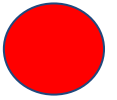
	8:45 - 9:00	9.00-9:45	9.45 - 10:15	10:15 - 11.15	11.15 - 11.45	12:00 - 1:00	1:00-2:30		2:30-3:00	3:00 - 3:15
M a n	Early Morning Walk	RWI	Literacy	Explore and Learn Bay CB Outside KS	Topic	Lu n c h	1:00 - 1:30 Maths	1:30 - 2:30 Explore and Learn Bay SN Outside KG	Whole school Assembly	Tidy up & storytime, talk through stories.
T u e s	Early Morning Walk	RWI	9:45 - 10:00 Spelling test	10-12 PPA Music & PE		Lu n c h	1:00 - 1:30 Maths	1:30 - 2:30 Explore and learn Bay KS Outside CB	Class Assembly	Jigsaw PSHE
W e d	Early Morning Walk	RWI	Maths	Explore and Learn Bay KG Outside SN	Topic	Lu n c h	Literacy 1BM 1:00 - 1:45	PE 1BM 1:45 - 2:30	Class Assembly	Tidy up & storytime, talk through stories.
PE 1E 1:00 - 1:45							Literacy 1E 1:45 - 2:30			
T h u r s	Early Morning Walk	RWI	Literacy	Explore and learn Bay-SN Outside- KG	Literacy	Lu n c h	1:00 - 1:30 Singing Assembly	1:30 - 2:00 Maths	2:00 - 3:00 Explore and Learn Bay CB Outside KS	Talk through stories.
F r i	Early Morning Walk	RWI	Literacy	Explore and Learn Bay KS Outside CM	Topic	Lu n c h	1:00 - 1:30 Maths	1:30 - 2:30 Explore and Learn Bay KG Outside SN	Whole School Celebration Assembly	Vote for story

Phonics Screening Check



- Every June all Year 1 and some Year 2 pupils will need to complete the PSC.
- Children read 40 words: 20 real words and 20 'alien' words.
- Children will be used to this process, as we do mocks and will complete the check with a familiar adult.
- There will be a preparing for the PSC and how to support with home reading zoom meeting in the spring term.

Family Involvement



We desperately need volunteers to hear readers/
prepare resources for the children.
If you can spare anytime then
please attend the Volunteer
meeting on 20th September at
2pm to find out more.

JOPSPA

The funds raised by JOPSPA are
vital for us to be able to provide our
children with effective resourcing
and key opportunities.

If you can help out at all - no matter
how small - then they would love to
hear from you.

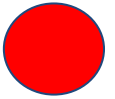


James Oglethorpe Primary School

Amazon Wish List



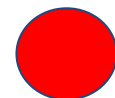
**All items on our list have been selected by
JOP5 teachers and OPAL leads to enrich the
children's learning environment.**



Parking

- Please be considerate when parking in the nearby streets.
- Try not to block drives/ fire exits or other cars as any altercation unfortunately comes back on our school.
- Some nearby parking is for residents only so please be vigilant.
- Street Safe scheme in place. If you require a permit then please contact Havering direct.

Clubs and Sport at JOPS



	Monday	Tuesday	Wednesday	Thursday	Friday
Before school		7:45am Y1-6 Parkour Club 24 spaces (Junior hall)	7:45am Y3-6 Tennis 18 spaces (Inf hall if wet) Karate Y1-6 Junior Hall	7:45am Y1-3 Dodgeball 24 spaces (Jnr hall if wet)	7:45am Y4-6 Dodgeball 24 spaces (Infant hall)
Lunchtime	Cricket (Junior Hall) Team Training	Cricket (Junior Hall)	Cricket (Junior Hall)	Cricket (Junior Hall)	Cricket (Junior Hall) Team Training
After school	Y4-6 Sportshall Athletics 24 spaces INVITE ONLY (Jnr hall if wet) Gemstars Dance Y1-6 (Infant Hall)	Y1/2 Mixed Football 15 boy spaces 15 girl spaces (Inf hall if wet)	Y4/5/6 Musical Theatre (Infant hall)	Y1/2/3 Musical Theatre (Classroom if wet) Y5/6 Mixed Netball 24 spaces (Jr hall if wet) Y5/6 Boys Football 24 spaces (Jnr hall if wet) Y3-4 Boys Football 24 spaces (Infant hall if wet)2	Y3-4 Girls Football 15 spaces Y5-6 Girls Football 15 spaces (Jnr hall if wet)

Mr Lendon

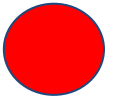
Miss Page

Mr Bennett

Mrs Cross

Mrs Lord

Social Media



- Weekly photographs from each year will be put onto website and social media
- Reviews and positive comments on social media help to spread the work that we do here.



The James Oglethorpe Primary School
1.3K followers • 0 following

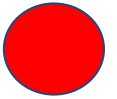
Posts About Reels Photos Videos

Intro
We are a welcoming and friendly school in the Cranham area of Upminster.

The James Oglethorpe Primary School
59m · 🌐

Year 1 are settling to their new classes and are enjoying getting to know the routines and adults. #aspirationinaction #identityinaction #integrityinaction





Thank you for your continuing support and we look forward to the year ahead.

Questions?